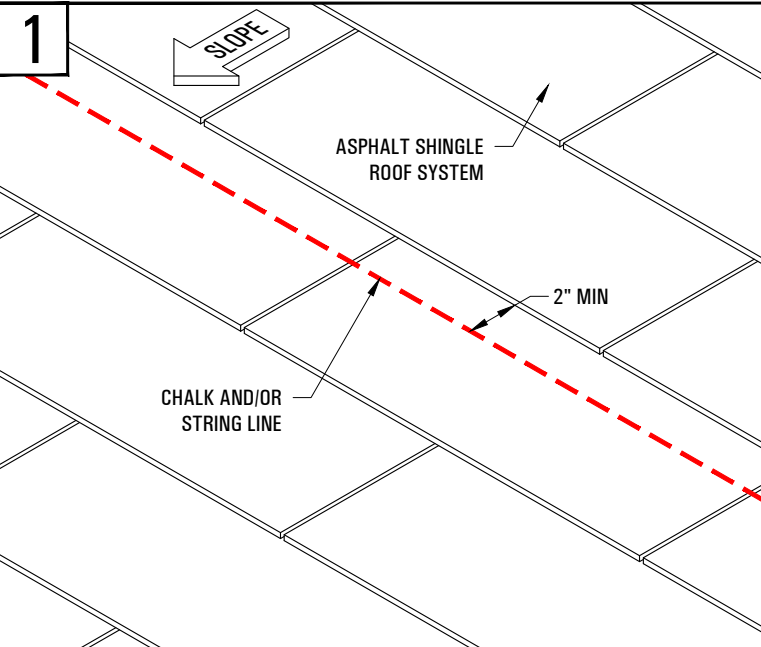
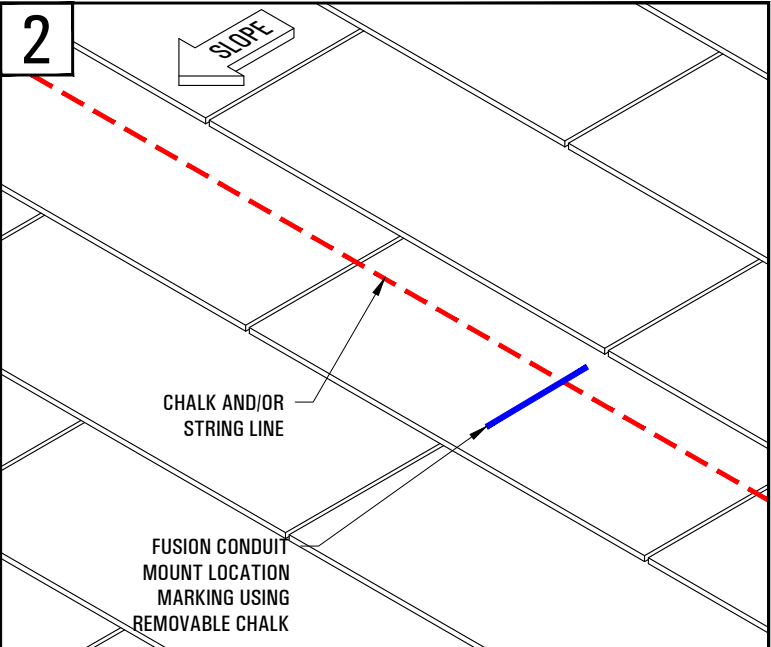


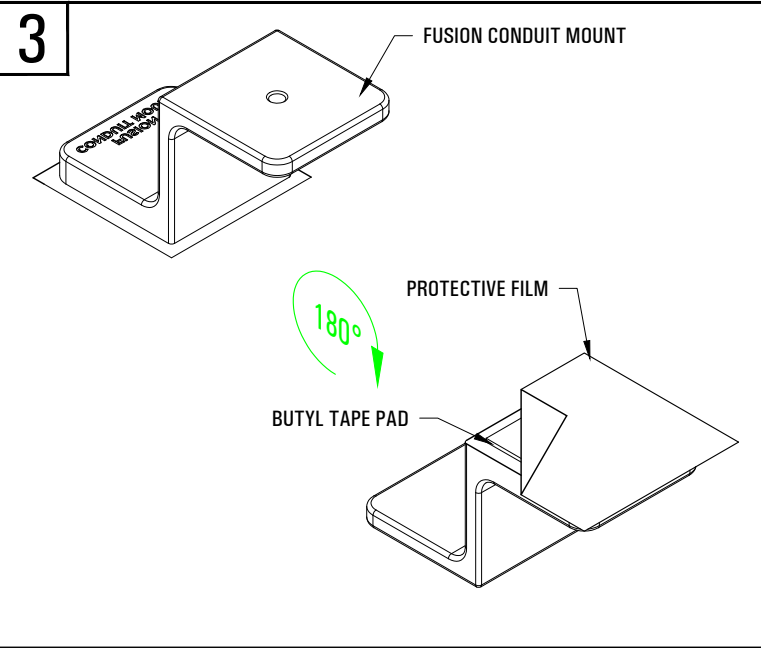
**\*\* FUSION CONDUIT MOUNT INSTALLATION INSTRUCTIONS \*\***



MEASURE THE DISTANCE FROM EAVE TO THE FIRST ROW OF FUSION CONDUIT MOUNTS. THEN, USE A CHALK AND/OR STRING LINE OVER THE TOP OF THE ASPHALT ROOF SHINGLE SURFACE, AND ESTABLISH IT A MINIMUM OF 2" FROM THE UP SLOPE DRIP EDGE OF THE ASPHALT SHINGLE ROW ABOVE, TO ESTABLISH A STRAIGHT GUIDELINE FOR INSTALLATION.



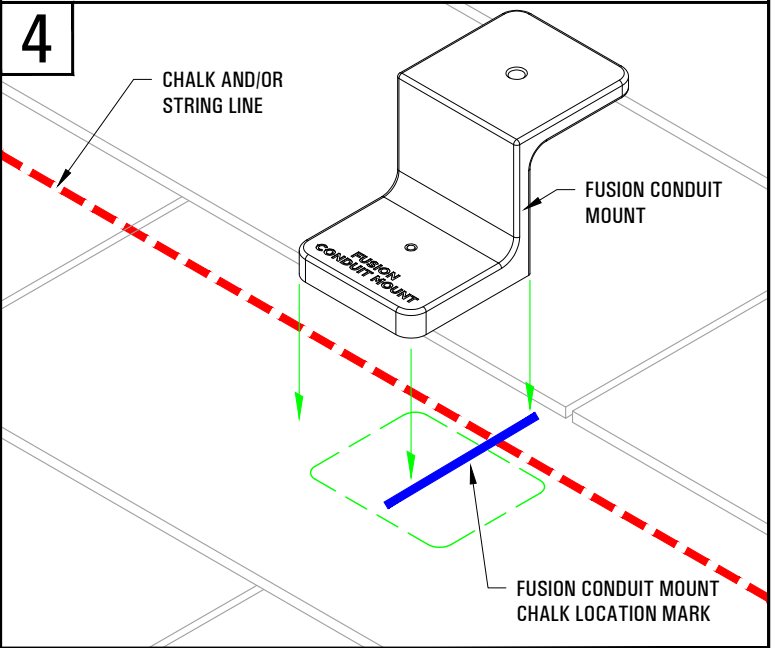
MEASURE AND MARK THE FUSION CONDUIT MOUNT LOCATIONS PER THE LAYOUT REQUIRED.



FLIP THE FUSION CONDUIT MOUNT OVER AND REMOVE THE PROTECTIVE FILM TO EXPOSE THE FUSION CONDUIT MOUNT'S BUTYL TAPE PAD.

NOTE: **DO NOT** APPLY SEALANT TO THE BOTTOM OF THE FUSION CONDUIT MOUNT OR OVER THE BUTYL TAPE PAD.

NOTE: INSPECT THE EXPOSED BUTYL TAPE PAD TO ASSURE IT IS FREE FROM ANY DIRT AND/OR DEBRIS THAT MAY INHIBIT PROPER BUTYL ADHESION.



BRUSH AWAY ANY DIRT AND/OR DEBRIS FROM THE ASPHALT SHINGLE ROOF SURFACE, LINE UP THE TOP EDGE OF THE FUSION CONDUIT MOUNT WITH THE CHALK AND/OR STRING LINE WHERE IT INTERSECTS THE CHALK LOCATION MARKING, THEN PLACE THE FUSION CONDUIT MOUNT ON THE ASPHALT SHINGLE ROOF SURFACE.

NOTE: DOUBLE CHECK ALL MEASUREMENTS AND LOCATION PRIOR TO PLACING THE FUSION CONDUIT MOUNT ONTO THE ASPHALT SHINGLE ROOF SURFACE.

NOTE: EXCESSIVE FORCE IS NOT REQUIRED FOR THE FUSION CONDUIT MOUNT INSTALLATION.

**FUSION CONDUIT MOUNT INSTALLATION**

**SOLAR CONNECTIONS INTERNATIONAL**

YOUR PREMIER SOLAR ATTACHMENT SOLUTION

220 EXCHANGE DRIVE, UNIT B, CRYSTAL LAKE, IL 60014

PHONE: 800.815.7652 WEBSITE: WWW.SOLARCONNECTIONS.COM  
 FAX: 815.455.4367 E-MAIL: INFO@SOLARCONNECTIONS.COM

DISCLAIMER

THE INFORMATION HEREIN IS CONFIDENTIAL AND PROPRIETARY AND IS NOT TO BE DISCLOSED OR DELIVERED TO THIRD PARTIES WITHOUT THE PRIOR WRITTEN CONSENT OF SOLAR CONNECTIONS INTERNATIONAL, INC.

SOLAR CONNECTIONS INTERNATIONAL, INC. DOES NOT WARRANT THE INSTALLATION IF ITS PRODUCTS. PRODUCT PERFORMANCE IS DEPENDENT ON THE INSTALLERS STRICT ADHERENCE TO THESE INSTALLATION INSTRUCTIONS.

SOLAR CONNECTIONS INTERNATIONAL, INC. IS NOT A LICENSED ARCHITECT OR ENGINEER, THEREFORE WE STRONGLY RECOMMEND THAT AN ARCHITECT AND/OR STRUCTURAL ENGINEER PROPERLY LICENSED IN THE CITY AND STATE WHERE THE PROJECT IS LOCATED, REVIEW THE CONTEMPLATED LAYOUT TO ENSURE THAT THE BUILDING STRUCTURE CAN WITHSTAND THE PROJECTED SNOW AND/OR WIND LOAD. SOLAR CONNECTIONS INTERNATIONAL, INC. ASSUMES NO LIABILITY THEREFORE.

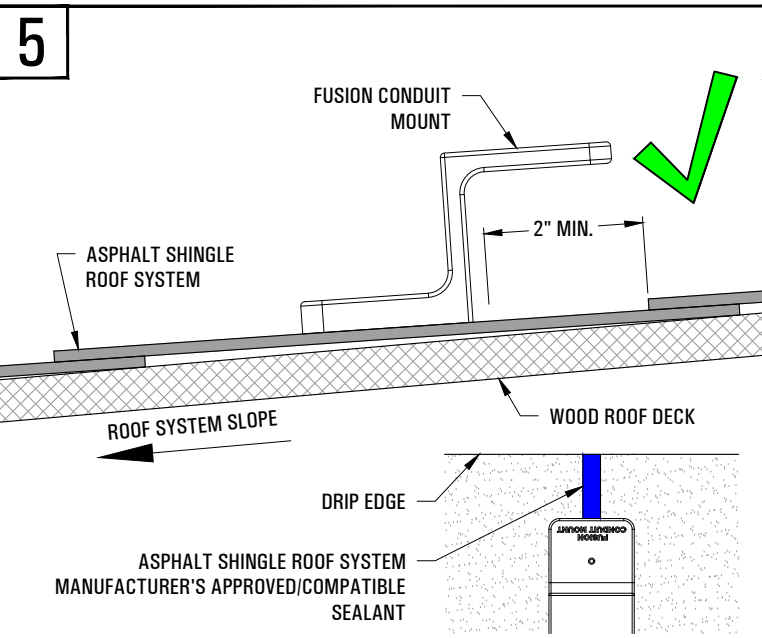
DRAWN BY: RJH

DATE: 9/19/25

SCALE: N.T.S.

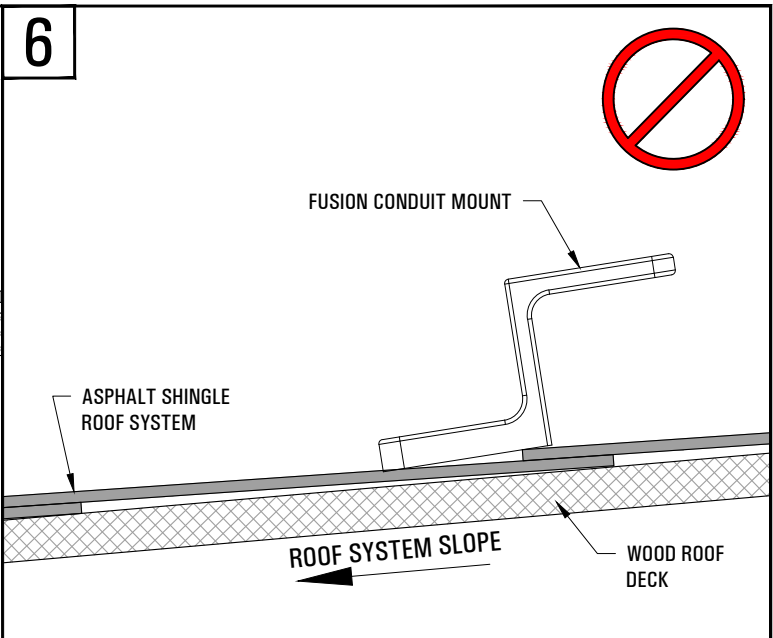
1

\*\* FUSION CONDUIT MOUNT INSTALLATION INSTRUCTIONS \*\*

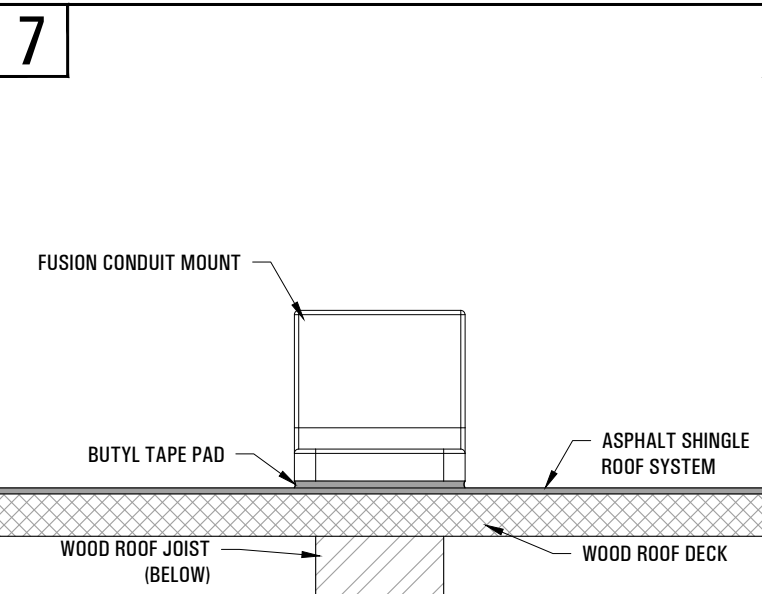


ENSURE THE FUSION CONDUIT MOUNT IS POSITIONED FLAT NEAR THE CENTER OF THE ASPHALT SHINGLE.

NOTE: AVOID PLACING THE FUSION CONDUIT MOUNT DIRECTLY OVER ASPHALT SHINGLE KEYWAYS AND / OR BUTT JOINTS. IF THIS IS UNAVOIDABLE, FILL THE KEYWAY OR BUTT JOINT FROM THE TOP EDGE OF THE FUSION CONDUIT MOUNT TO THE SHINGLE COURSE ABOVE WITH THE ASPHALT SHINGLE ROOF SYSTEM MANUFACTURER'S APPROVED/COMPATIBLE SEALANT, AS SHOWN ABOVE ONLY.

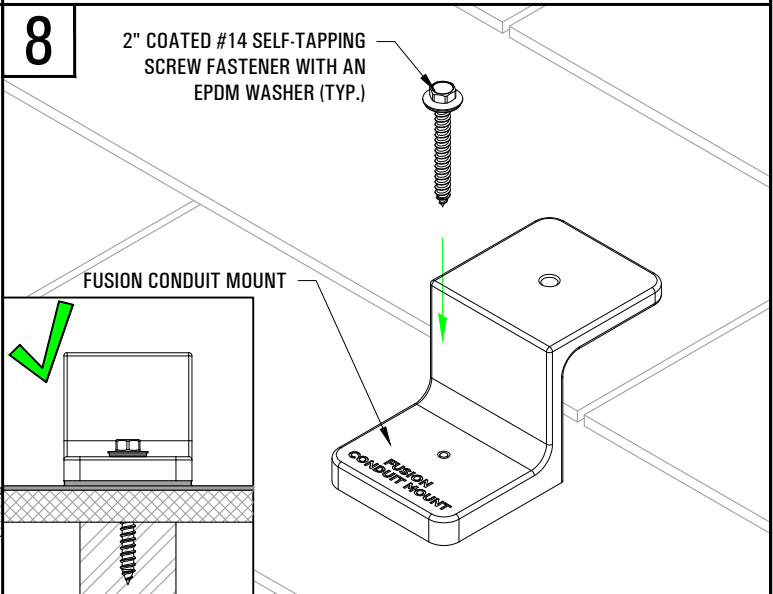


DO NOT INSTALL THE FUSION CONDUIT MOUNT OVER THE HORIZONTAL DRIP EDGE OF EITHER THE SHINGLE ROW ABOVE OR BELOW THE ASPHALT SHINGLE INSTALLATION PLACEMENT ROW.



WHILE NOT REQUIRED, IT IS ALWAYS PREFERRED TO FASTEN THE FUSION CONDUIT MOUNT INTO A ROOF JOIST, BASED ON THE INTENDED PURPOSE OF ITS INSTALLATION. WHEN A ROOF JOIST IS LOCATED, INSTALL ONE SOLAR CONNECTIONS INTERNATIONAL SUPPLIED 2" COATED #14 SELF-TAPPING SCREW FASTENER WITH AN EPDM WASHER.


NOTE: WHILE NOT REQUIRED, IT IS PREFERRED THAT THE FUSION CONDUIT MOUNT BE INSTALLED INTO A ROOF JOIST, HOWEVER, THE DECISION TO FASTEN TO THE ROOF DECK ONLY, IS TO BE DETERMINED BY THE INTENDED PURPOSE OF THE FUSION CONDUIT MOUNT'S INSTALLATION.



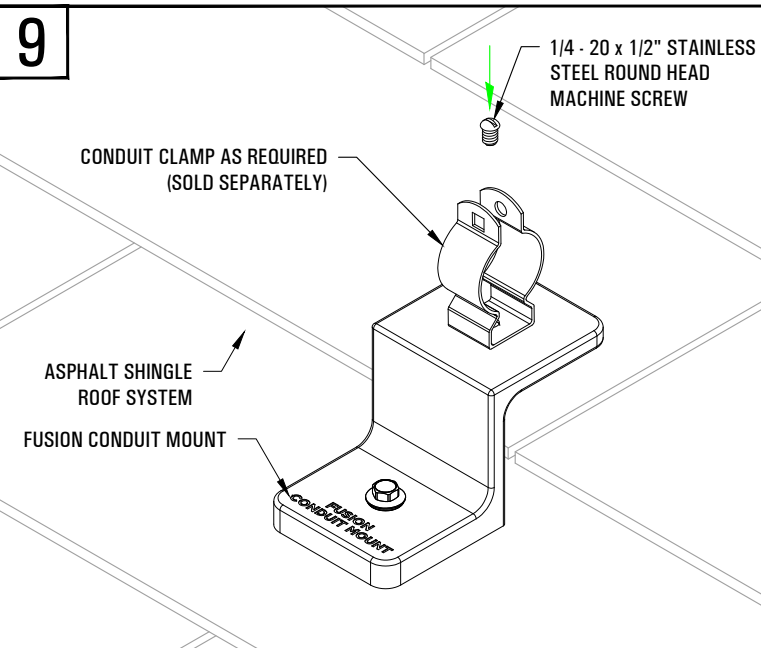
IF THE SOLAR CONNECTIONS INTERNATIONAL SUPPLIED 2" COATED #14 SELF-TAPPING SCREW WITH EPDM WASHER MISSES THE ROOF JOIST BELOW, AND THE FUSION CONDUIT MOUNT WILL PROPERLY SUPPORT THE INTENDED PURPOSE OF ITS INSTALLATION, KEEP THAT FUSION CONDUIT MOUNT IN PLACE AS IS, WHILE ATTEMPTING TO INSTALL THE NEXT FUSION CONDUIT MOUNT IN THAT ROW INTO THE NEXT AVAILABLE ROOF JOIST BELOW.

NOTE: **DO NOT** REMOVE ANY SCREW FASTENERS THAT MISS THE ROOF JOIST, IF THE FUSION CONDUIT MOUNT WILL PROPERLY SUPPORT THE INTENDED PURPOSE OF ITS INSTALLATION. IF IT WILL NOT, SIMPLY REMOVE THE FASTENERS AND FUSION CONDUIT MOUNT, AND FOLLOW THE ASPHALT SHINGLE MANUFACTURER'S INSTRUCTIONS FOR PROPERLY REPAIRING THE SHINGLE ROOF SYSTEM, WHERE THAT FUSION CONDUIT MOUNT WAS INSTALLED THEN REMOVED (TYP.).

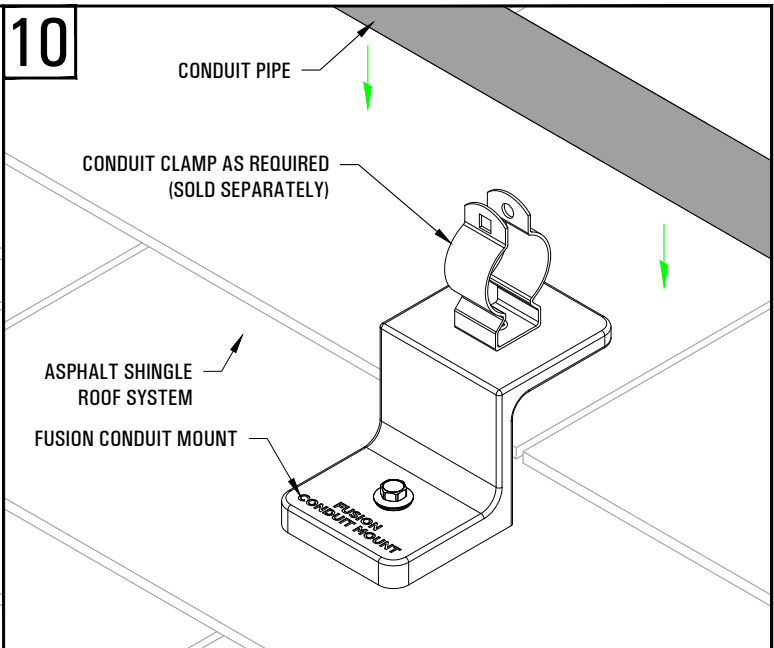
FUSION CONDUIT MOUNT INSTALLATION (CON'T)

<div>  <p><b>SOLAR CONNECTIONS INTERNATIONAL</b></p> <p>YOUR PREMIER SOLAR ATTACHMENT SOLUTION</p> <p>220 EXCHANGE DRIVE, UNIT B, CRYSTAL LAKE, IL 60014</p> <p>PHONE: 800.815.7652 WEBSITE: WWW.SOLARCONNECTIONS.COM</p> <p>FAX: 815.455.4367 E-MAIL: INFO@SOLARCONNECTIONS.COM</p> </div>		<div> <p><b>DISCLAIMER</b></p> <p>THE INFORMATION HEREIN IS CONFIDENTIAL AND PROPRIETARY AND IS NOT TO BE DISCLOSED OR DELIVERED TO THIRD PARTIES WITHOUT THE PRIOR WRITTEN CONSENT OF SOLAR CONNECTIONS INTERNATIONAL, INC.</p> <p>SOLAR CONNECTIONS INTERNATIONAL, INC. DOES NOT WARRANT THE INSTALLATION IF ITS PRODUCTS. PRODUCT PERFORMANCE IS DEPENDENT ON THE INSTALLERS STRICT ADHERENCE TO THESE INSTALLATION INSTRUCTIONS.</p> <p>SOLAR CONNECTIONS INTERNATIONAL, INC. IS NOT A LICENSED ARCHITECT OR ENGINEER, THEREFORE WE STRONGLY RECOMMEND THAT AN ARCHITECT AND/OR STRUCTURAL ENGINEER PROPERLY LICENSED IN THE CITY AND STATE WHERE THE PROJECT IS LOCATED, REVIEW THE CONTEMPLATED LAYOUT TO ENSURE THAT THE BUILDING STRUCTURE CAN WITHSTAND THE PROJECTED SNOW AND/OR WIND LOAD. SOLAR CONNECTIONS INTERNATIONAL, INC. ASSUMES NO LIABILITY THEREFORE.</p> </div>		DRAWN BY:	RJH
				DATE:	9/19/25
				SCALE:	N.T.S.
				2	

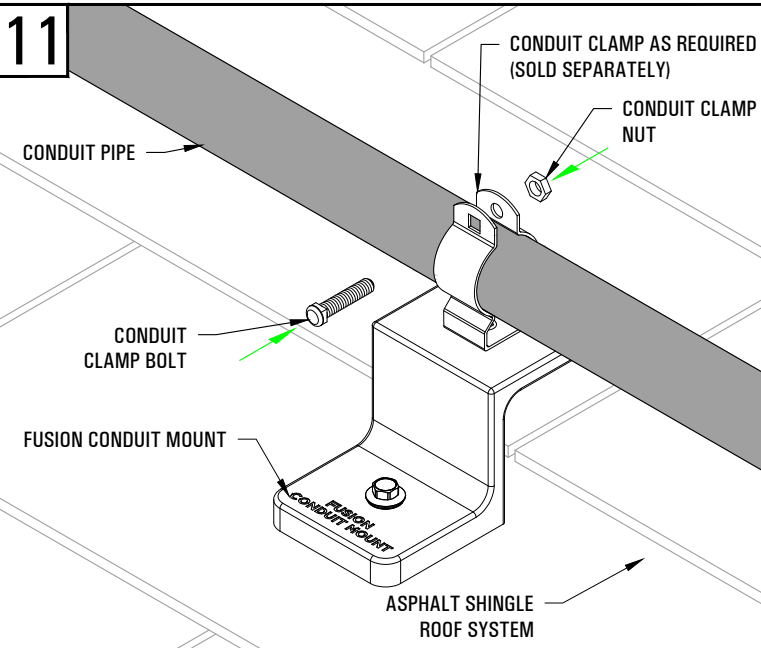
**\*\* FUSION CONDUIT MOUNT INSTALLATION INSTRUCTIONS \*\***



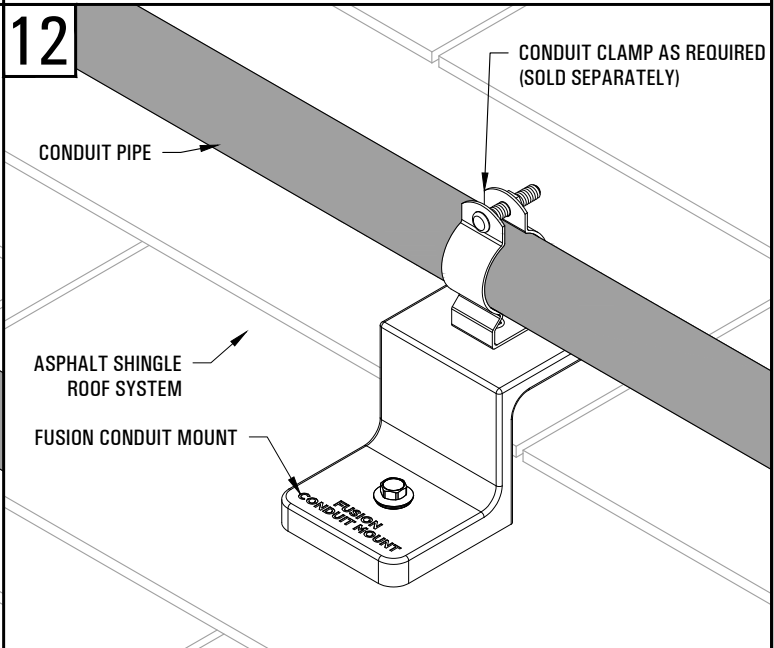
SECURE THE CONDUIT CLAMP AS REQUIRED (SOLD SEPARATELY) TO THE FUSION CONDUIT MOUNT USING THE ONE SOLAR CONNECTIONS INTERNATIONAL SUPPLIED 1/4" - 20 x 1/2" STAINLESS STEEL ROUND HEAD MACHINE SCREW, AND TIGHTEN UNTIL THE CONDUIT CLAMP IS SECURE.



MAKE SURE THE CONDUIT CLAMP IS ROTATED TO PROPERLY RECEIVE THE INTENDED DIRECTION OF THE CONDUIT PIPE, THEN INSERT THE CONDUIT PIPE THROUGH THE TOP OF THE CONDUIT CLAMP UNTIL IT IS SEATED PROPERLY WITHIN THE CLAMP ITSELF.



SECURE THE NUT AND BOLT THAT WAS SUPPLIED BY OTHERS WITH THE CONDUIT CLAMP (OR ANY OTHER FASTENING MECHANISM), SO THAT THE CONDUIT PIPE IS PROPERLY SECURED WITHIN THE CONDUIT CLAMP ITSELF.



ONCE THE CONDUIT PIPE IS PROPERLY SECURED, AND THE CLAMP IS FASTENED, THE FUSION CONDUIT MOUNT INSTALLATION IS COMPLETE.

**FUSION CONDUIT MOUNT INSTALLATION (CON'T)**



**SOLAR CONNECTIONS INTERNATIONAL**

YOUR PREMIER SOLAR ATTACHMENT SOLUTION

220 EXCHANGE DRIVE, UNIT B, CRYSTAL LAKE, IL 60014

PHONE: 800.815.7652 WEBSITE: WWW.SOLARCONNECTIONS.COM

FAX: 815.455.4367 E-MAIL: INFO@SOLARCONNECTIONS.COM

**DISCLAIMER**

THE INFORMATION HEREIN IS CONFIDENTIAL AND PROPRIETARY AND IS NOT TO BE DISCLOSED OR DELIVERED TO THIRD PARTIES WITHOUT THE PRIOR WRITTEN CONSENT OF SOLAR CONNECTIONS INTERNATIONAL, INC.

SOLAR CONNECTIONS INTERNATIONAL, INC. DOES NOT WARRANT THE INSTALLATION IF ITS PRODUCTS. PRODUCT PERFORMANCE IS DEPENDENT ON THE INSTALLERS STRICT ADHERENCE TO THESE INSTALLATION INSTRUCTIONS.

SOLAR CONNECTIONS INTERNATIONAL, INC. IS NOT A LICENSED ARCHITECT OR ENGINEER, THEREFORE WE STRONGLY RECOMMEND THAT AN ARCHITECT AND/OR STRUCTURAL ENGINEER PROPERLY LICENSED IN THE CITY AND STATE WHERE THE PROJECT IS LOCATED, REVIEW THE CONTEMPLATED LAYOUT TO ENSURE THAT THE BUILDING STRUCTURE CAN WITHSTAND THE PROJECTED SNOW AND/OR WIND LOAD. SOLAR CONNECTIONS INTERNATIONAL, INC. ASSUMES NO LIABILITY THEREFORE.

DRAWN BY: RJH

DATE: 9/19/25

SCALE: N.T.S.

**3**