



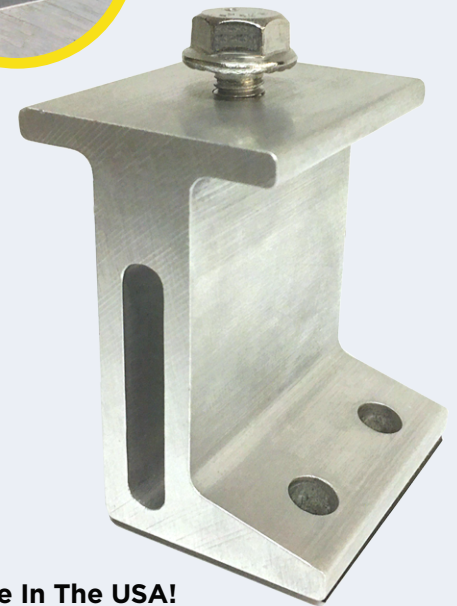
FOR VALLEY ATTACHMENTS AND  
UNIQUE SECTIONS OF YOUR METAL  
ROOF SYSTEM APPLICATIONS

The Solar Connections International PowerMount 9000-S is uniquely designed to provide the ultimate in strength and versatility with regards to any solar attachments found within your valley, as well as within any unique sections of your metal roofing system applications. As with our entire Solar Connections International product line, these specific products are designed for strength, capability, and versatility and have become a multi-use solution for all forms of valley and unique roof area attachments in the market. Capitalizing on the ease of installation with its custom pre-applied EPDM gasket specifically designed to create a watertight seal that you can rely on, this product can be used with any R-Panel, Corrugated Panel, valley details, or unique metal roof system applications that require robust and reliable attachment points for your solar installations.

- Universal Attachment For All Valley and Unique Sections of Your Metal Roof System Applications.
- The PowerMount 9000-S Provides Increased Strength and Pull Out Due To Angled Fastening Attachment Design.
- Pre-applied EPDM gasket for a premium water tight seal.
- Designed For Use with our Universal L-Foot-SLT & our Innovative Solar Connections Kit, and all other L-Foot-SLT designs/components.
- Competitively Priced.
- Requires only 1 SKU eliminating the need to inventory multiple products for the same installation.
- The single piece design simplifies installation, and considerably reduces your labor and installation costs.





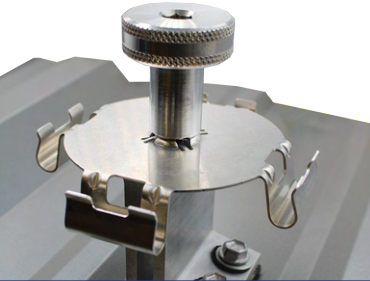
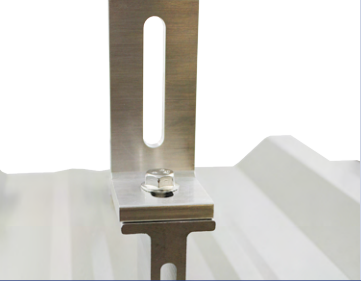


Optional engraving ensures your product was manufactured with pride, and made in the USA!



**Proudly Made In The USA!**

\*This product can be manufactured either domestically or internationally, upon request.

VALLEY POWERMOUNT		INCLUDED HARDWARE		INSTALLATION PROFILE
<b>9000-S 1-PIECE</b> 	2" Coated #14 Self-Tapping Screws With EPDM Washers For Installation Into A Wood Roof Deck 	M8 x 1.25" x 20MM Stainless Steel Flange Bolt 		
	<b>NOTE:</b> For Installation Through A Metal Roof Deck, Please Contact Your SCI Representative For That Fastener Option.	 <p><b>SOLAR CONNECTION KIT</b> Includes: PowerBolt* and Cable Management Disc</p>		 <p><b>UNIVERSAL L-FOOT-SLT</b></p>