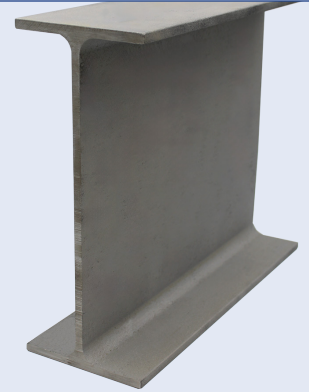




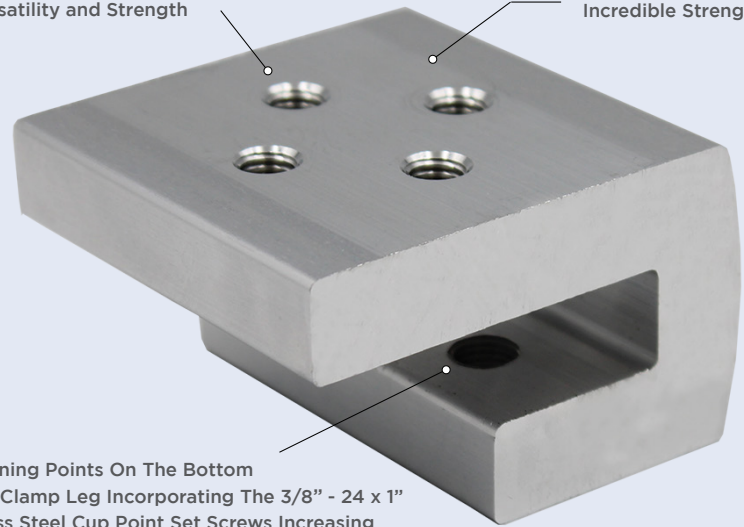
The Solar Connections I-Clamp 360° is your robust solution to the difficult task of the attachment of your solar panel system to structural I-Beam installations and structures. Perfect for car ports and structural framing systems that require solar panel system installations, the Solar Connections International I-Clamp 360° greatly simplifies your installation and considerably reduces your labor and installation costs, by eliminating the need to pre-drill or tirelessly work to penetrate the structural I-Beam for attachment of your clamp or your solar panel system assembly. With the 2 fastening points for attachment on the bottom side of the I-Clamp 360°, the strength in its attachment is considerably increased, while providing 4 locations on the top side of the clamp, giving you versatility and flexibility in the location of your attachment for your solar panel installation through the use of our SCI M8-Bolt 1.25" x 20MM Stainless Steel Flange Bolt. The Solar Connections International I-Clamp 360° is the revolutionary attachment that will make all of your solar panel system installations over structural I-Beam framing simple, clean, and easy.



- Eliminates the need to pre-drill or tirelessly work to penetrate your structural I-Beam
- I-Clamp 360° Simplifies Installation and Considerably Reduces Your Labor and Installation Costs
- 2 Points of Attachment Availability For Bottom Portion of Clamp Creating Incredible Strength in its Attachment
- 4 Attachment Points To Utilize The SCI M8-Bolt 1.25" x 20MM Stainless Steel Flange Bolt for Incredible Versatility
- Properly Designed to Create Incredible Strength In Its Attachment and Grip of the Steel I-Beam

Extended Top Leg Incorporating 4 Attachment Points To Utilize The SCI M8-Bolt 1.25" x 20MM Stainless Steel Flange Bolt for Incredible Versatility and Strength

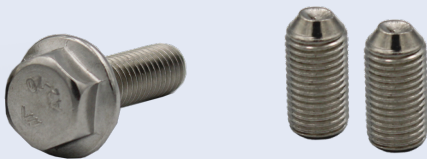
Extremely Robust Clamp With Incredible Strength & Versatility



2 Fastening Points On The Bottom Of The Clamp Leg Incorporating The 3/8" - 24 x 1" Stainless Steel Cup Point Set Screws Increasing Your Strength Of Attachment & Grip To Strengthen Your I-Beam Installation

**WHAT'S INCLUDED:**

- I-Clamp 360°
- (1) SCI M8-Bolt 1.25" x 25MM Stainless Steel Flange Bolt
- (2) 3/8" - 24 x 1" Stainless Steel Cup Point Set Screws



**Proudly Made In The USA!**

*\*This product can be manufactured domestically, upon request.*

**FRONT VIEW**

**SIDE VIEW**

**TOP VIEW**

**BOTTOM VIEW**

